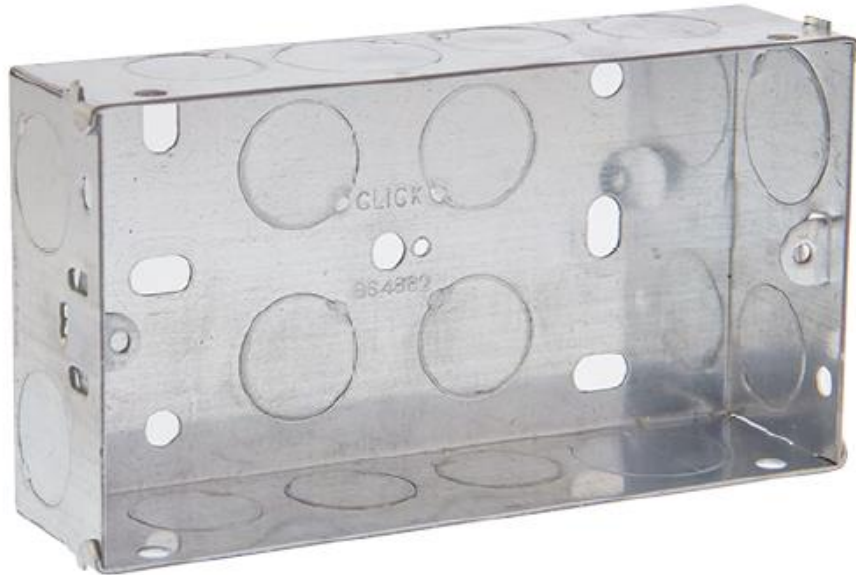


49-579 STEEL FLUSH BOX 2 gang



Specifications:

Dimensions	135mm (W) x 70mm (H) x 35mm (D)		
Materials	Body:	Galvanised Steel Earth	
	Terminal & Terminal Screw:	Brass	
Back Box Knockouts	Total	13 x Ø20mm,	3 x Ø25mm
	Top	3 x Ø20mm,	1 x Ø25
	Sides	2 x Ø20mm (L)	1 x Ø20mm, 1 x Ø25mm (R)
	Bottom	3 x Ø20mm,	1 x Ø25mm
	Rear	4 x Ø20mm	
Standards	BS 4662		