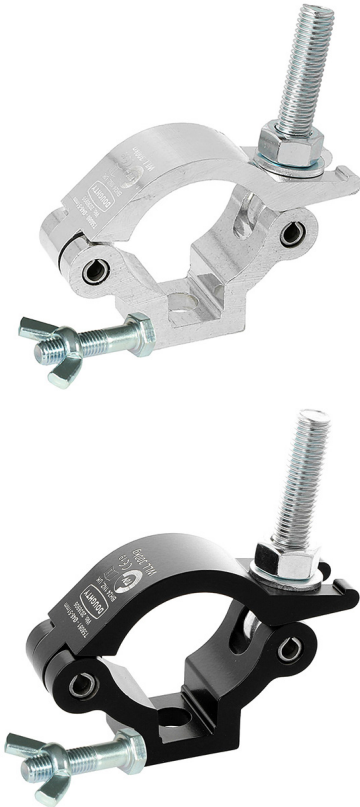




Product Data Sheet

# Slimline Lightweight Hook Clamp Coupler



A high tensile extruded Slimline half coupler supplied with fixing kit	
<b>Part Nos</b>	T58085 - Polished T58086 - Powder Painted Satin Black
<b>Tube Diameter</b>	Ø48 - 51mm (1.89" - 2.01")
<b>Materials</b>	Main Body - AW6082 T6 Aluminium Roll Pins - Stainless Steel Eyebolt Assy - Grade 8.8
<b>Max Tightening Torque</b>	30Nm
<b>Fixings</b>	Supplied with M10 x 35 Bolt / Wing Nut
<b>WLL</b>	300Kg
<b>Weight</b>	0.32Kg (0.70 lbs)
<b>Factor of Safety</b>	5:1
<b>Approval</b>	TÜV Approved

Dimensions in mm

