

Software-Configured **Dante**® Interfaces



 **Dante**®

RDL's software-configured Dante® network audio interfaces deliver the quality and performance expected from RDL products while providing the convenience and flexibility of software configuration.

>>> Learn more at rdlnet.com/Dante



RDL®
Radio Design Labs

DD SERIES-RN31

Wall-Mounted Bi-Directional Mic/Line Dante Interface 4 x 4

Dante AES67



(DD-RN31 Shown - also available in stainless steel or black)

- Dante Network Interface for Four Audio Inputs and Four Audio Outputs
- One Mini-jack, Two RCA Jacks and Two XLR Front-Panel Inputs
- One Mini-jack Front-Panel Output; Two Balanced Outputs on Rear-Panel Terminal Block
- Module is Configured and Adjusted Using Network Control Software
- Converts Two Standard XLR Mic or Line Audio Sources to Dante Network Channels

- Each Input Gain is Selected by Software
- Mic Gain: 35 dB, 42 dB or 59 dB
- Line Gain: Unity or 12 dB
- 48 V Mic Phantom (P48) Selected by Software
- Each Mini-jack and RCA -10 dBV Input May Feed One or Two Dante Network Channels
- Converts Four Dante Network Audio Signals to Line Level
- Mini-jack -10 dBV Stereo Output from Two Specific Dante Channels



DD SERIES-RN40

Wall-Mounted Bi-Directional Mic/Line Dante Interface 4 x 2

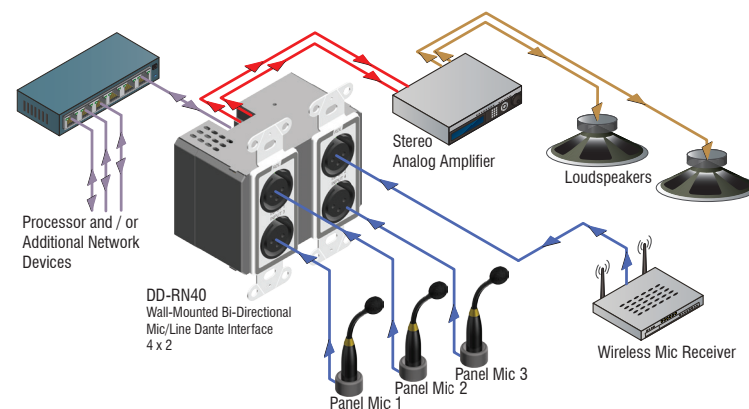
Dante AES67



(DD-RN40 Shown - also available in stainless steel or black)

- Dante Network Interface for Four Audio Inputs and Two Audio Outputs
- Four XLR Front-Panel Inputs
- Two Outputs on Rear Panel Detachable Terminal Block
- Module is Configured and Adjusted Using Network Control Software
- Converts Four Standard XLR Mic or Line Audio Sources to Dante Network Channels
- Each Input Gain is Selected by Software
- Mic Gain: 35 dB, 42 dB or 59 dB

- Line Gain: Unity or 12 dB
- 48 V Mic Phantom (P48) Selected by Software
- Converts Two Dante Network Audio Signals to Line Level
- Each Output Equipped with Software Controlled Attenuator in 1 dB Steps
- Studio Quality, Low-Noise Performance
- High Resolution 24 Bit Analog to Digital and Digital to Analog Conversion
- Legendary RDL Analog Filtering Enhances Superb Audio Performance



DD SERIES-RN42

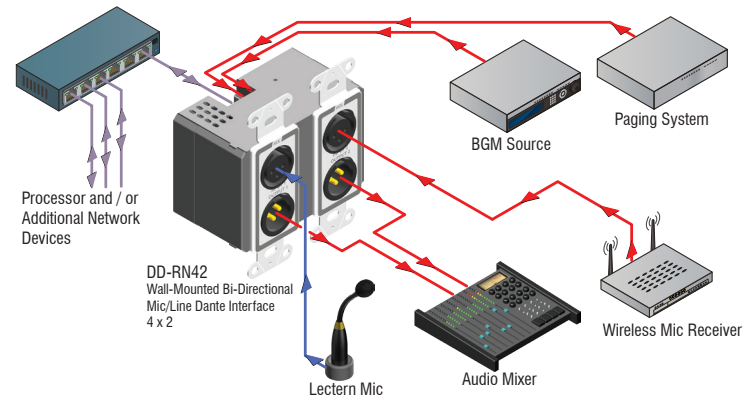
Wall-Mounted Bi-Directional Mic/Line Dante Interface 4 x 2

Dante AES67



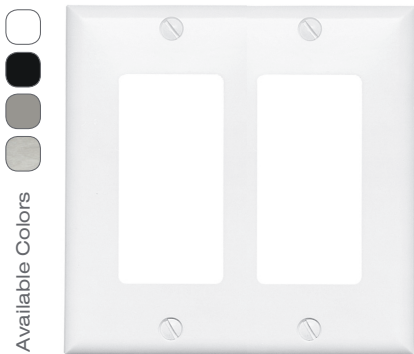
(DD-RN42 Shown - also available in stainless steel or black)

- Dante Network Interface for Four Audio Inputs and Two Audio Outputs
- Two Inputs and Outputs on XLR Jacks on Front Panels
- Two Inputs on Rear Panel Detachable Terminal Block
- Module is Configured and Adjusted Using Network Control Software
- Converts Two Standard Mic or Line Audio Sources to Dante Network Channels
- Each Input Gain is Selected by Software
- Mic Gain: 35 dB, 42 dB or 59 dB

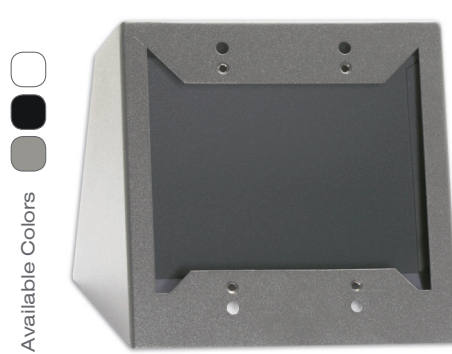


- Line Gain: Unity or 12 dB
- 48 V Mic Phantom (P48) Selected by Software
- Converts Two Dante Network Audio Signals to Line Level
- Each Output Equipped with Software Controlled Attenuator in 1 dB Steps
- Studio Quality, Low-Noise Performance
- High Resolution 24 Bit Analog to Digital and Digital to Analog Conversion
- Legendary RDL Analog Filtering Enhances Superb Audio Performance

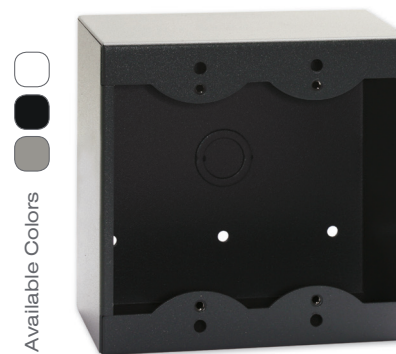
Mounting Accessories



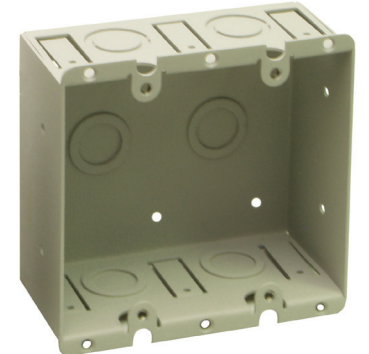
CP Series
1 to 4 Gang Steel
Cover Plates



DC Series
1 to 4 Gang Steel
Desktop Chassis

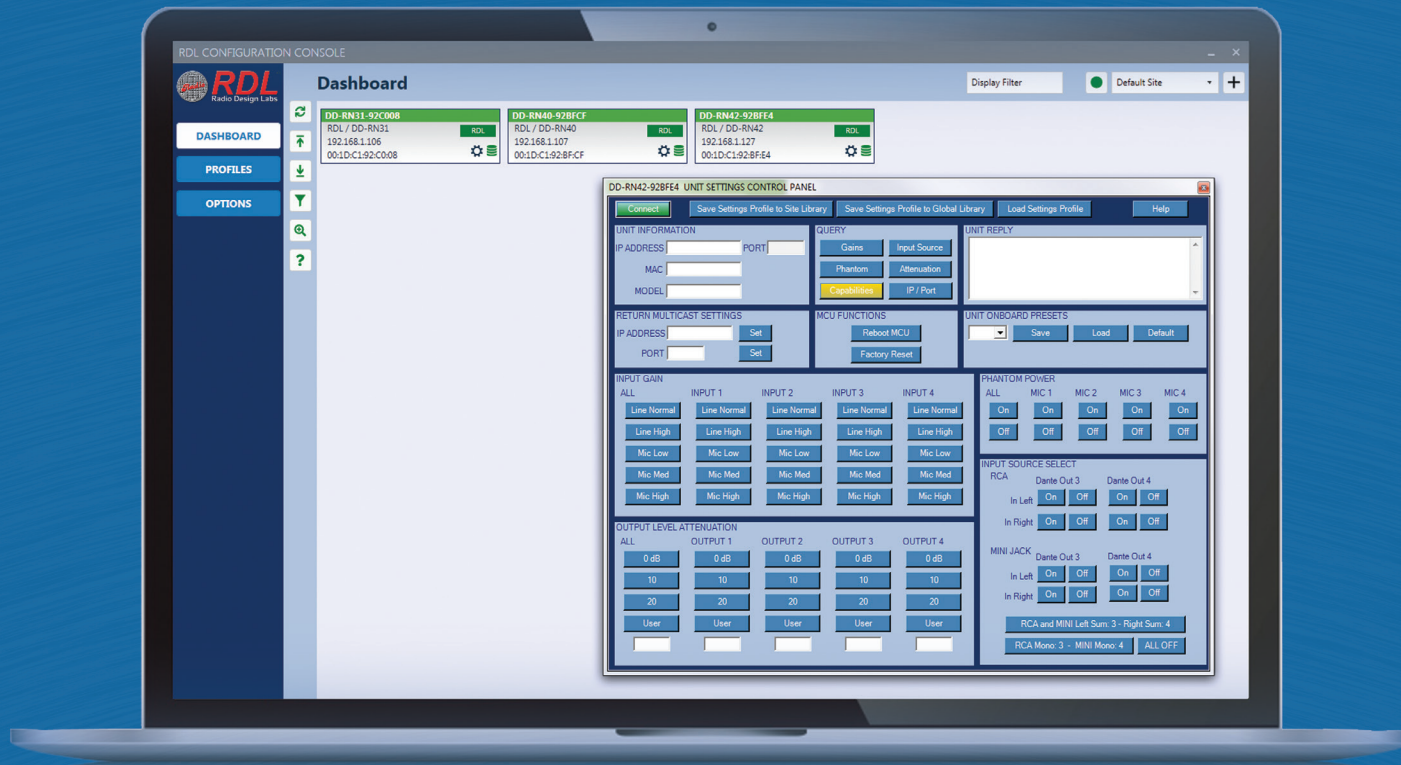


SMB Series
1 to 4 Gang Steel
Surface Mount Boxes



WB Series
Universal Wall Boxes
(US & International)

Console Software



Features:

- Discovers Dante units on the network
- Identifies RDL units that are equipped with software-controlled settings (configurable)
- Displays the status of settings in configurable RDL units
- Provides a control panel to store settings in configurable RDL units (example: gain, level, phantom)
- Indexes units by sites defined on your local computing device
- Allows saving the settings profiles of selected RDL units on your local computing device
- Allows saving unit settings profiles in a Site Library or in a Global Library
- Provides Excel import and export of unit settings by Site or Global Library
- Allows you to “push” settings out to one or multiple RDL configurable units

U.S. & International Sales:
Phone: (800) 281-2683, (928) 443-9391 Fax: (800) 289-7338, (928) 443-9392
RDL, 659 6th Street, Prescott, AZ. 86301 USA

European Sales:
Phone: (31) 20-6238 983 Fax: (31) 20-6225 287
RDL Europe BV, Gebouw Y-Tech, Van Diemenstraat 36, 1013 NH Amsterdam, The Netherlands

Technical Support:
Phone: (800) 933-1780, (928) 778-3554 Fax: (928) 778-3506
RDL, 659 6th Street, Prescott, AZ. 86301 USA



Made in the USA

rdlnet.com

RL10120321