

PSA1+

PROFESSIONAL STUDIO ARM

The PSA1+ is the ultimate studio boom arm for podcasters, streamers, broadcasters and content creators. Its innovative parallelogram spring design ensures ultra-smooth movement and precise microphone placement with a full 360-degree rotation, while its fully damped internal springs and neoprene arm cover eliminate mechanical noise for completely silent operation. It features an integrated cable management system that fits both USB and XLR cables, and can support any microphone, mount or accessory weighing between 94g and 1.2kg that features a 3/8-inch or 5/8-inch mounting thread.



EASY
POSITIONING



PARALLEL
MOVEMENT



SILENT
OPERATION



CLAMP OR
DESK INSERT



MECHANICAL SPECIFICATIONS

Weight (grams):	1.52
Dimensions (millimetres):	Collapsed Width: 65 Length: 500 Depth: 180
	Fully Extended Width: 65 Length: 940 Depth: 100
Compatible Products:	Any microphone, mount or accessory weighing between 94g and 1.2kg that features a 3/8-inch or 5/8-inch mounting thread



Black



White

WHAT'S IN THE BOX



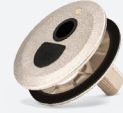
1 x PSA1+



1 x 3/8" to 5/8" Adaptor



1 x Desk Mount Clamp



1 x Threaded Desk Mount

DIMENSIONS

